
EXPLORING COLOR RELATIONSHIPS AND PATTERN

MS. FELKER

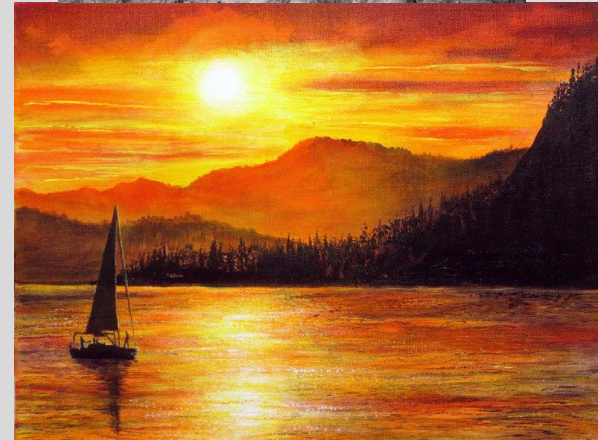


TERMS TO REMEMBER (WRITE THIS DOWN!)

- Monochromatic
- Analogous
- Complimentary
- Polychromatic
- Pattern

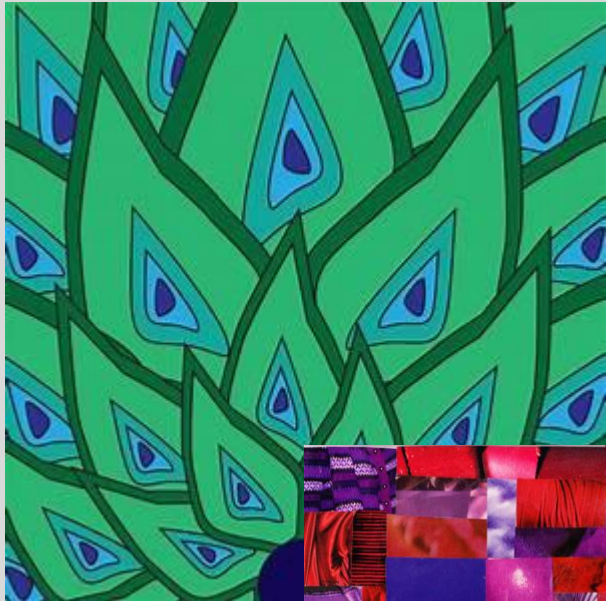
MONOCHROMATIC COLOR SCHEME

Using ONE color, with different tints and shades

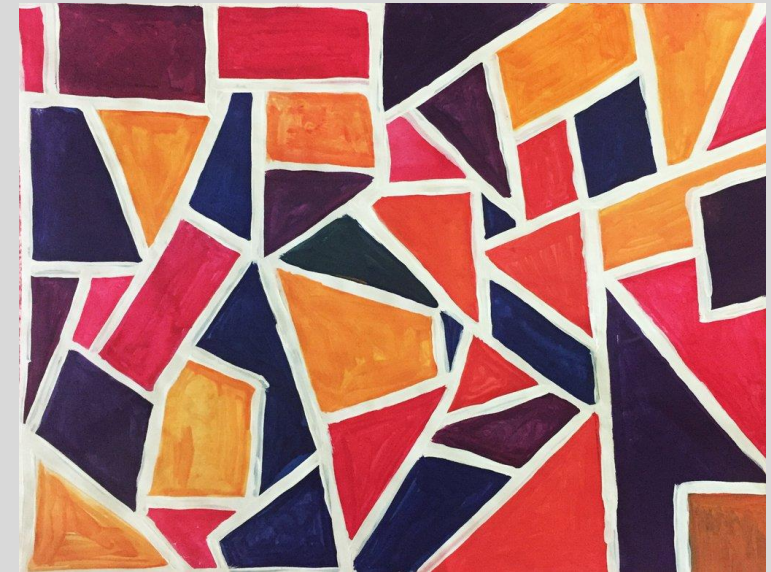


ANALOGOUS COLOR SCHEME

- Colors that are **next to each other** on the color wheel



analogous colors are
color wheel neighbors

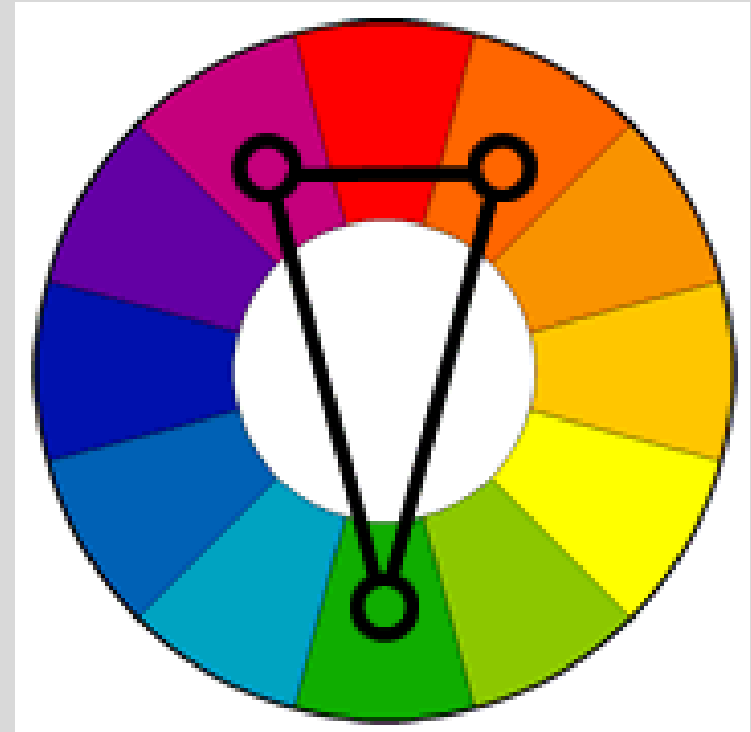


COMPLIMENTARY COLOR SCHEME

Complementary: **ACROSS** each other on the wheel

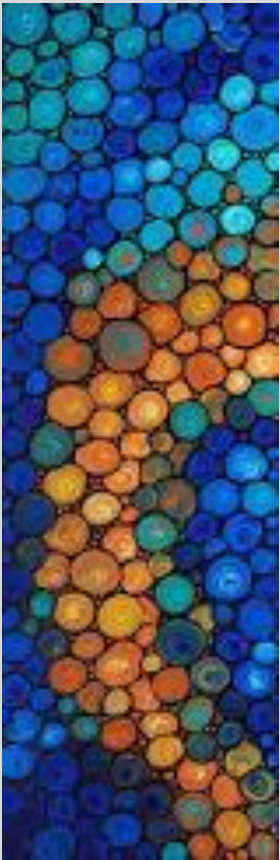


Split Complimentary: One color is paired with **TWO** colors **ACROSS** from the color wheel. They make a **TRIANGLE**.

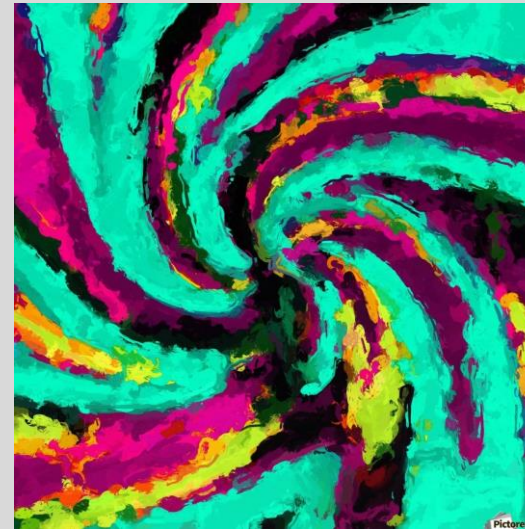


COMPLIMENTARY COLOR SCHEME

Complementary: **ACROSS** each other on the wheel



Split Complimentary: **One** color is paired with **TWO** colors **ACROSS** from the color wheel. They make a **TRIANGLE**.



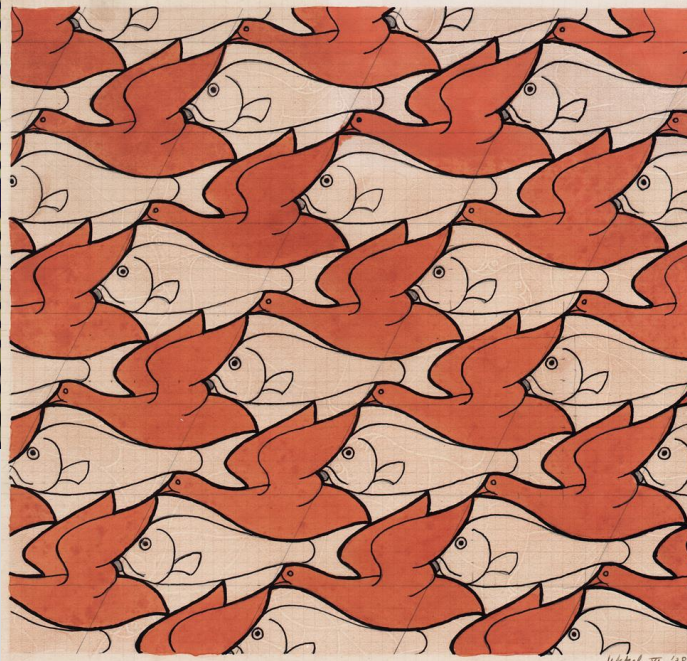
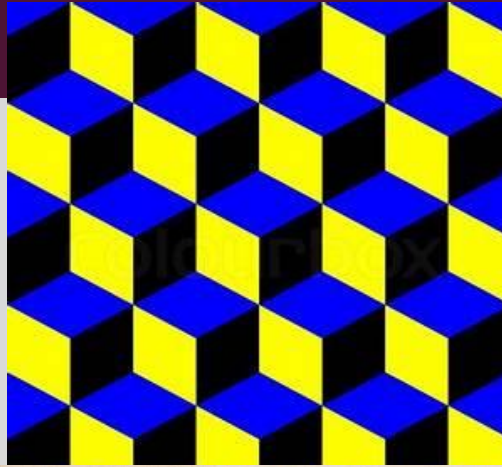
POLYCHROMATIC COLOR SCHEME

- A **variety** of colors

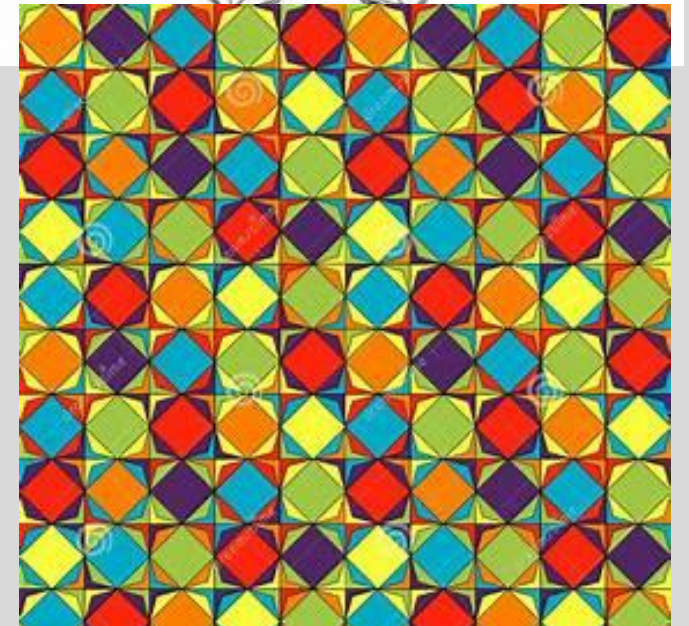
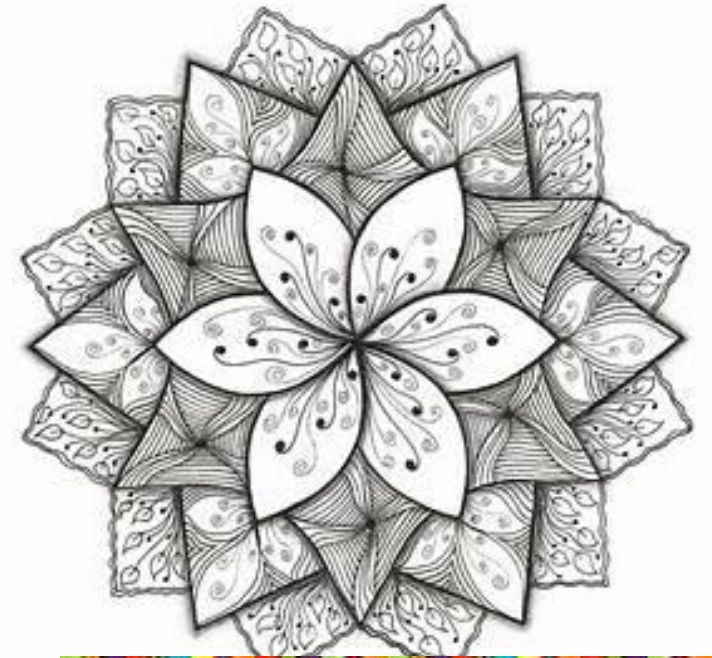


PATTERN

■ Pattern= **Repetition** in a work



2 Motiven: Ausgangssystem (A)-(B) die NS 18, 29, 30 Michel, II - '98



WHAT ARE WE DOING???

YARN ART!



ART EXPERIENCE

- 1. On your scrap paper, think about....
 - patter/design
 - color scheme
 - create 2-3 ideas
- 2. Gather Materials
(paper, ruler, pencil, glue, yarn, scissors)
- 3. CREATE

REQUIREMENTS:

- Use one **color scheme** we learned about
- Incorporate some aspect of **pattern** in your artwork
- No paper should be showing! Must be completely covered by yarn.